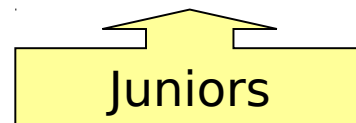
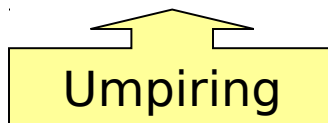
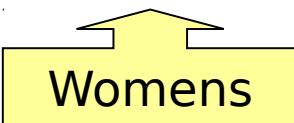
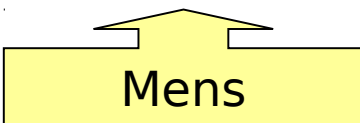
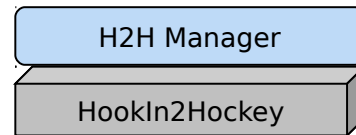
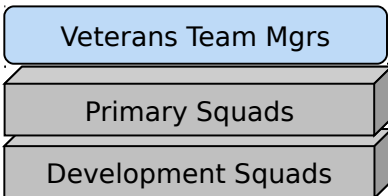
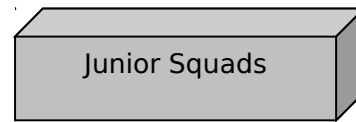
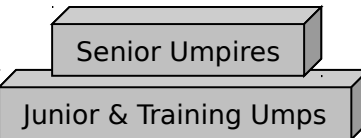
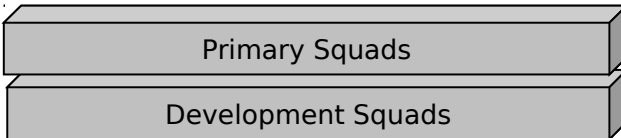
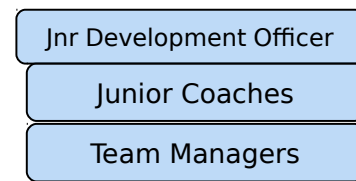
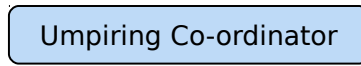
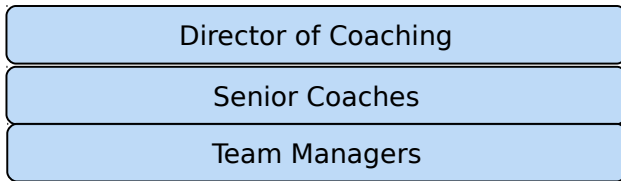
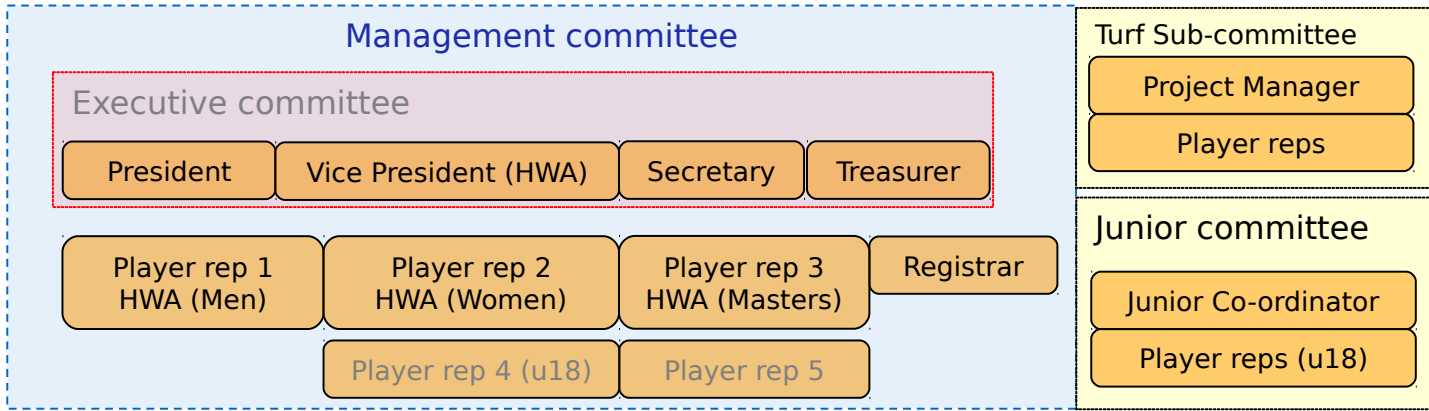
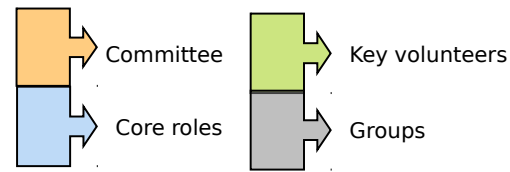


KDHC Organisation Chart 2017



Patron 1 Patron 2



Org Chart Notes

- This Org Chart is based on the club constitution.
- Committee members have the power to vote on resolutions, hence have direct influence on the direction of the club.
- Core roles (blue) indicate the volunteers or staff that are required to run the club on a week-to-week basis during the hockey season.
- Key Volunteer roles (Green) are positions that assist the running and enjoyment of the club. This is a non-hierarchical list.
- Items in **Red** are unallocated or proposed roles
- Items in **Grey** are optional roles.
- Every club member should fit into at least one block
 - hopefully many members are in 2 blocks!
 - hopefully few members are in 3 blocks!
- Members are welcome to volunteer for other tasks not listed in this chart - many assistants make the work lighter for everyone and help with transitions between years.
- *New roles will be required for the new clubhouse & turfs.*